



Elevation - B - 1616 sq.ft.

## The VICTORIA – 45-1



Elevation - A - 1616 sq.ft.



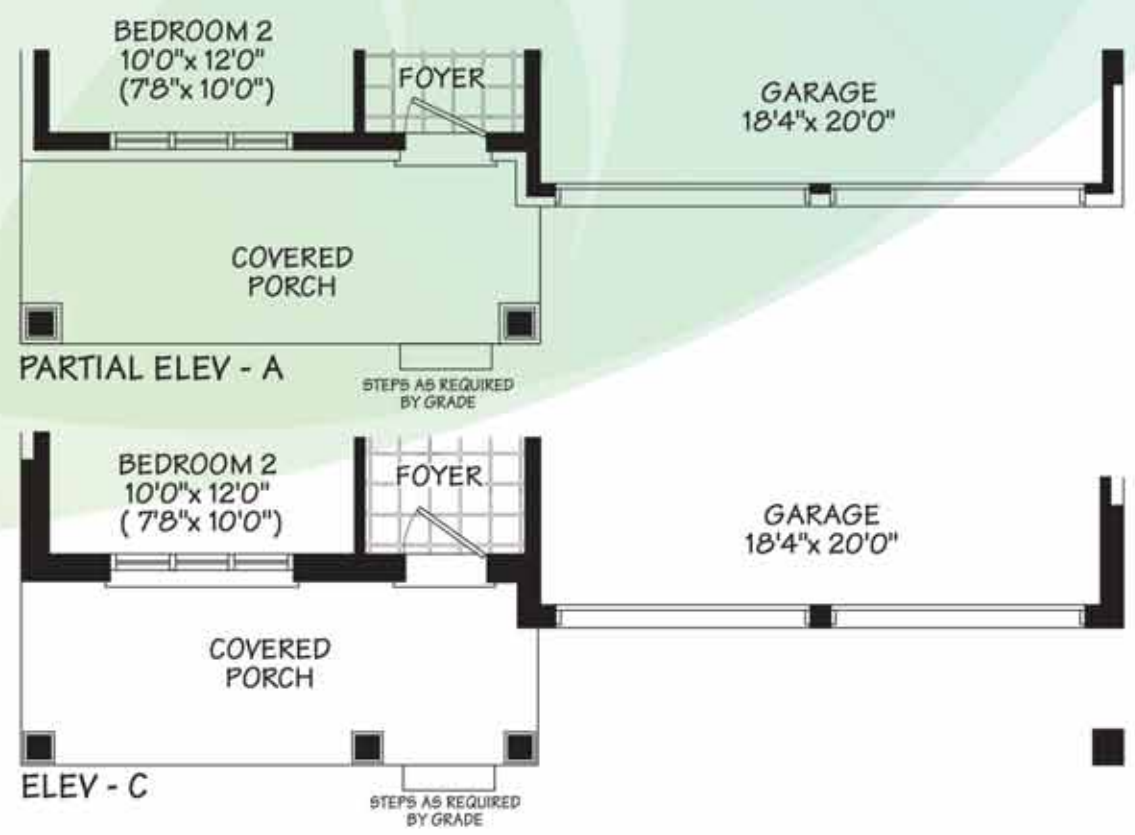
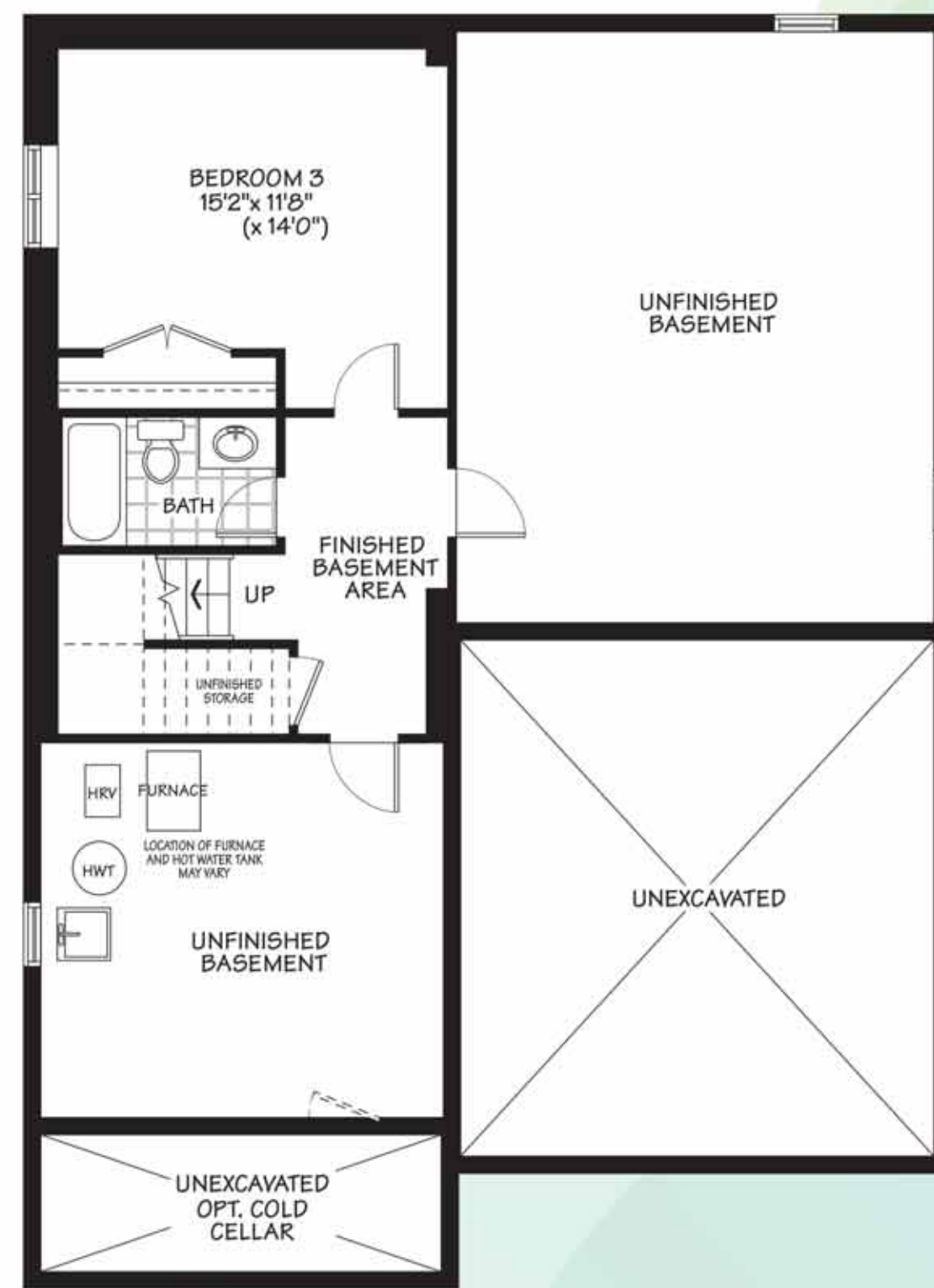
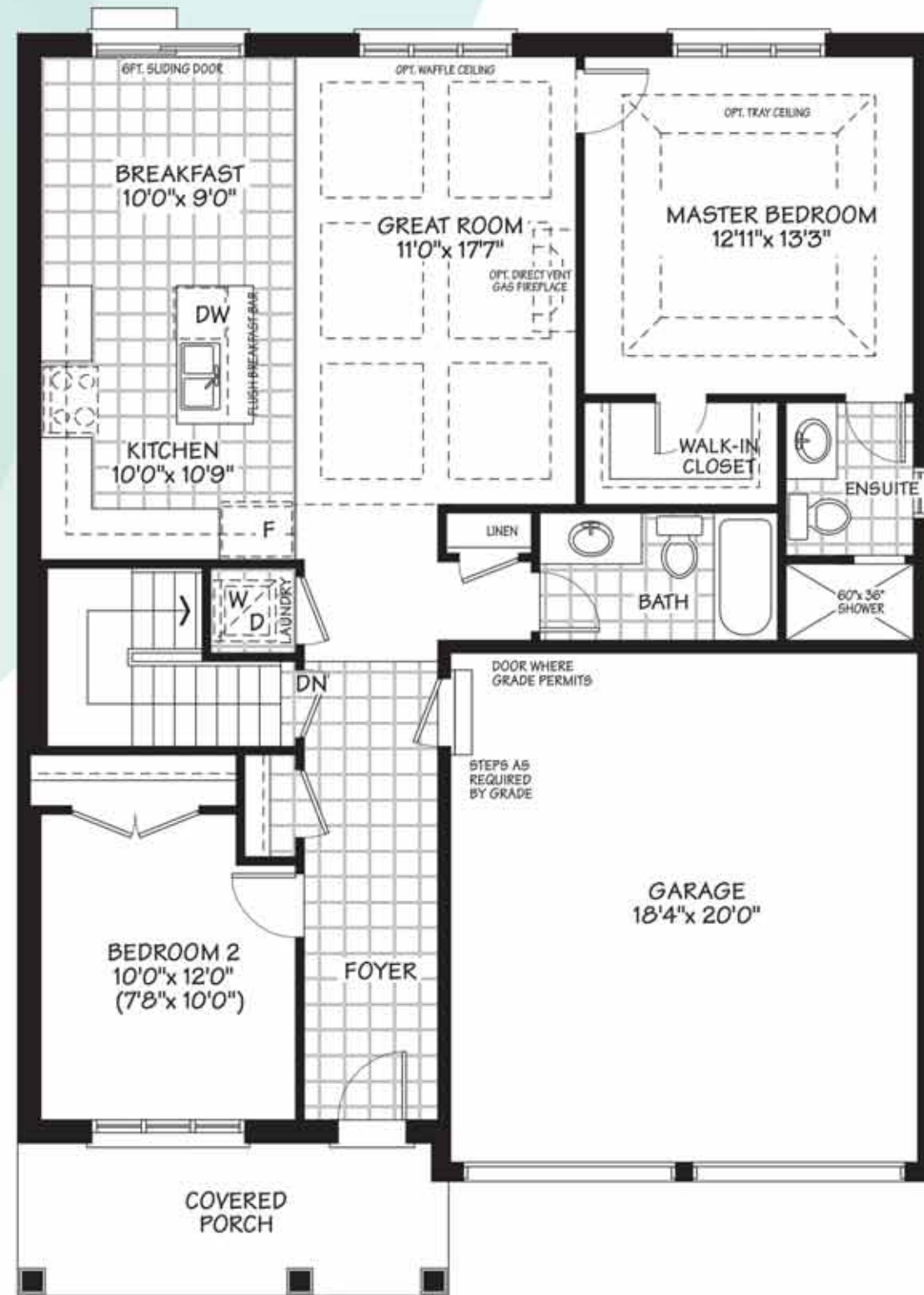
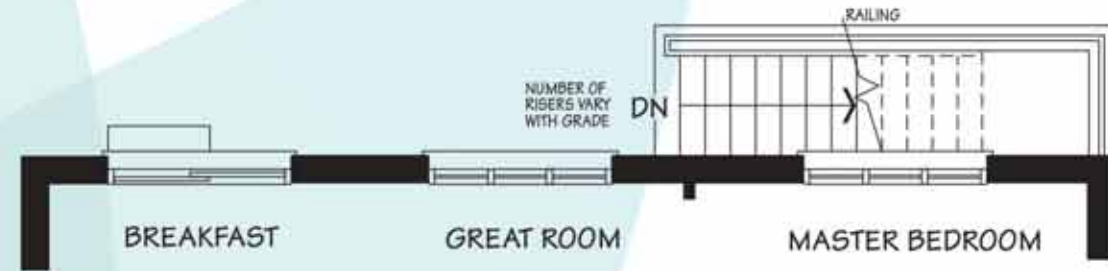
Elevation - C - 1616 sq.ft.

All illustrations are artist's concept. E.&O.E.



**45ft.**  
DESIGN





The  
**VICTORIA**  
45-1



ELEV - A - 1616 sq.ft.



ELEV - B - 1616 sq.ft.



ELEV - C - 1616 sq.ft.

The floorplans and elevations shown, dimensions, specifications and architectural detailing are pre-construction plans and may be revised or improved as necessitated by architectural controls and the construction process. All dimensions are approximate. Actual usable floor space may vary from the stated area. House may be reversed and purchaser agrees to accept the same. Specifications are subject to change without notice. Steps may vary at any exterior entrance. All illustrations are artist's concept. E. & O. E.